



BEYOND **Design**





logan



logan



slide

4 legs

4 legs with castors

swivel

bench

slide w/armrests

4 legs w/armrest

4 legs with castors
w/armrest

swivel w/armrest

slide w/writing tablet

4 legs w/writing tablet

4 legs with castors
w/writing tablet

swivel w/writing tablet



EN 16139



BIFMA TEST

logan showing



tools



certification

features



trolley available



La seduta certificata CATAS e BIFMA.

Estremamente versatile grazie allo schienale disponibile in plastica pieno o traforato, o da tappezzare o ancora in rete, che le conferisce un design distintivo. È abbinabile a tutti i telai disponibili in assortimento; opzionabili i braccioli in plastica con o senza aggancio porta tavoletta e gli agganci laterali.

Logan garantisce una linea ricca e completa.

Plus:

- qualità certificata CATAS e BIFMA;
- grande versatilità grazie al comodo schienale disponibile in tante alternative;
- linea funzionale e completa.

Logan è ideale per gli **ambienti Office e Community.**

CATAS and BIFMA certified chair.

Offers extreme versatility thanks to the backrest available in solid or perforated plastic, either to be upholstered or in mesh, lending it a distinctive design. It can be combined with all the frames available in our range; optional plastic armrests, with or without writing tablet holder and lateral hooks.

Logan offers a complete and highly versatile line.

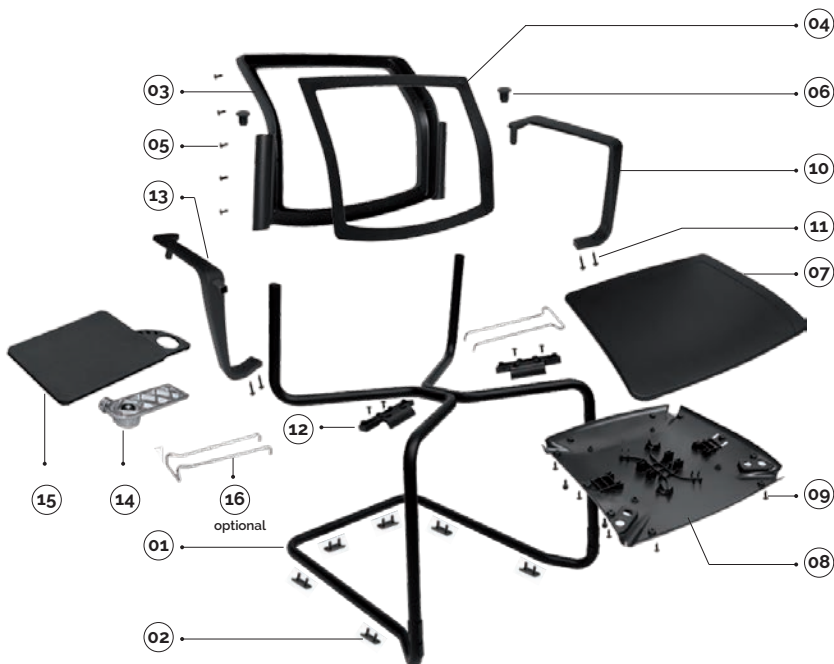
Advantages:

- quality is CATAS and BIFMA certified;
- great versatility thanks to the comfortable backrest available in a range of alternatives;
- a functional and complete line.

Logan is ideal for **Office and Community environments.**

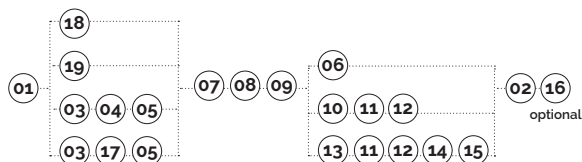
logan

slide

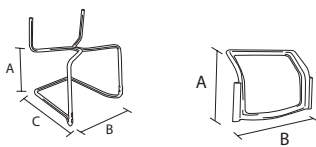


plastic colours

- nero/black
- grigio/gray ral 7040
- bianco/white ral 9003
- blu/blue ral 5014



main component sizes



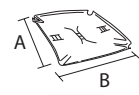
01

03



04

07



08

optional



16

01 logan-base a slitta in tubo asform d.22 tappi esclusi

logan-slide frame asform pipe d.22 without caps

| code | finishing | q.kit | q.pack | a | b | c | kg.x1 | vol.x1 |
|------------|----------------------|-------|--------|-----|-----|-----|-------|----------|
| 110503-059 | ● nero/black | x1 | 50 | 450 | 550 | 550 | 4,70 | mc. 0.06 |
| 110504-059 | ● grigio/grey ig2621 | x1 | 50 | 450 | 550 | 550 | 4,70 | mc. 0.06 |
| 110510-059 | ● cromato/chrome | x1 | 50 | 450 | 550 | 550 | 4,70 | mc. 0.06 |

02 p2p-pinza due pioli in polietilene nera

p2p -two pins pliers in black polythene

| code | finishing | q.kit |
|------------|--------------|-------|
| 134003-003 | ● nero/black | x6 |

03 logan-telaio schienale in plastica portante

logan-outer back frame in plastic

| code | finishing | q.kit | q.pack | a | b | kg.x1 | vol.x1 |
|------------|--------------|-------|--------|-----|-----|-------|-----------|
| 132103-084 | ● nero/black | x1 | 10 | 390 | 500 | 0,58 | mc. 0.088 |

04 logan-cornice schienale in plastica per rete

logan-open frame in plastic for mesh

| code | finishing | q.kit | q.pack | a | b | kg.x1 | vol.x1 |
|------------|--------------|-------|--------|-----|-----|-------|-----------|
| 132103-085 | ● nero/black | x1 | 20 | 380 | 420 | 0,30 | mc. 0.005 |

05 vite hilo tc + 4x14 zn nere

screw hilo tc+ 4x14 zn black

| code | finishing | q.kit |
|------------|--------------|-------|
| 117803-120 | ● nero/black | x10 |

06 logan-tappo per telaio e schienale

inner caps-cover head d.22

| code | finishing | q.kit | q.pack | kg.x1 | vol.x1 |
|------------|--------------|-------|--------|-------|-----------|
| 131703-029 | ● nero/black | x2 | 20 | 0,025 | mc. 0.001 |

07 logan-sedile in plastica colorato a vista

logan-plastic seat coloured at sight

| code | finishing | q.kit | q.pack | a | b | kg.x1 | vol.x1 |
|------------|--------------|-------|--------|-----|-----|-------|----------|
| 132203-082 | ● nero/black | x1 | 10 | 430 | 460 | 0,86 | mc. 0.01 |

08 logan-sottosedile in plastica per telaio 4 gambe e slitta

logan-outer plastic seat for four legs and slide

| code | finishing | q.kit | q.pack | a | b | kg.x1 | vol.x1 |
|------------|--------------|-------|--------|-----|-----|-------|-----------|
| 132203-080 | ● nero/black | x1 | 20 | 420 | 450 | 0,51 | mc. 0.007 |

09 logan-sacchetto con viti + pf1 per 10 sedie - per sedile

logan-screws + pf1 for 10 chairs (screw for fixed seat panel)

| code | finishing | q.kit | q.pack |
|------------|--------------|-------|--------|
| 117000-022 | ● nero/black | x0.1 | 1 |

16 logan-coppia agganci laterali maschio + femmina cromati

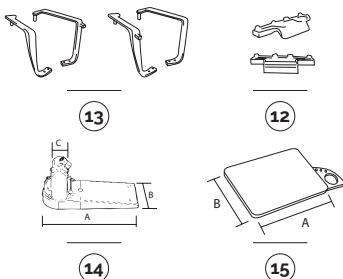
logan-chrome lateral hooks male + female

| code | finishing | q.kit | q.pack | kg.x1 | vol.x1 |
|------------|------------------|-------|--------|-------|------------|
| 113410-100 | ● cromato/chrome | x1 | 100 | 0,13 | mc. 0.0004 |

logan

slide/tablet accessories

main component sizes



13 logan-coppia braccioli con aggancio portatavoletta in plastica

logan-pair of plastic arms right/left with writing tablet hook

| code | finishing | q.kit | q.pack | kg.x1 | vol.x1 |
|------------|--------------|-------|--------|----------------------------------|----------------|
| 131703-032 | ● nero/black | x1 | 10 | left + right writing tablet hook | 0.49 mc. 0.051 |
| 131703-033 | ● nero/black | x1 | 10 | right + left writing tablet hook | 0.49 mc. 0.051 |

11 logan-kit viti per 10 coppie braccioli

logan-kit screws for 10 pair arms

| code | finishing | q.kit | q.pack | kg.x1 | vol.x1 |
|------------|--------------|-------|--------|-------|--------|
| 117000-025 | ● nero/black | x0.1 | 1 | | |

12 logan-piastra di fissaggio per bracciolo

logan-fixing plate for arm

| code | finishing | q.kit | q.pack | kg.x1 | vol.x1 |
|------------|--------------|-------|--------|-------|------------|
| 131703-034 | ● nero/black | x2 | 50 | 0.07 | mc. 0.0013 |

14 spta-snodo tavoletta antipanico in alluminio lucido

spta-polished aluminium swivel safety mechanism for tablet

| code | finishing | q.kit | q.pack | a | b | c | kg.x1 | vol.x1 |
|------------|-------------------------------------|-------|--------|-----|----|-------|-------|-----------|
| 111701-900 | ● alluminio/aluminium destro/right | x1 | 10 | 180 | 66 | 15x15 | 0.365 | mc. 0.001 |
| 111701-901 | ● alluminio/aluminium sinistro/left | x1 | 10 | 180 | 66 | 15x15 | 0.365 | mc. 0.001 |

15 tlt3-tavoletta ambidestro con portabicchiere e portapenne

tlt3--writing tablet with cup holder and pen tray

| code | finishing | q.kit | q.pack | a | b | kg.x1 | vol.x1 |
|------------|--------------|-------|--------|-----|-----|-------|-----------|
| 134003-041 | ● nero/black | x1 | 10 | 410 | 300 | 1.05 | mc. 0.036 |

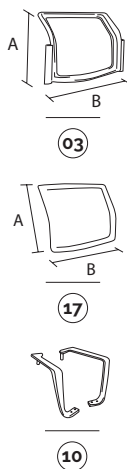
TLT tablet TLT2 tablet TLT3 tablet BEAN tablet TL02 tablet SPT2 mechanism tablet SPTA mechanism antipanic



for writing tablet options, see page 242/243

slide/options

main component sizes



03 logan-telaio schienale in plastica portante

logan-outer back frame in plastic

| code | finishing | q.kit | q.pack | a | b | kg.x1 | vol.x1 |
|------------|--------------|-------|--------|-----|-----|-------|-----------|
| 132103-084 | ● nero/black | x1 | 10 | 390 | 500 | 0.58 | mc. 0.088 |

17 logan-pannello schienale in plastica da tappezzeria

logan-plastic panel back for upholstery

| code | finishing | q.kit | q.pack | a | b | kg.x1 | vol.x1 |
|------------|--------------|-------|--------|-----|-----|-------|-----------|
| 132103-086 | ● nero/black | x1 | 20 | 380 | 420 | 0.90 | mc. 0.005 |

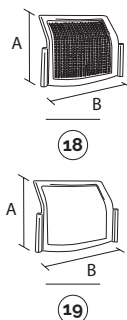
10 logan-coppia braccioli dx/sx in plastica

logan-pair of plastic arms right/left

| code | finishing | q.kit | q.pack | kg.x1 | vol.x1 |
|------------|--------------|-------|--------|-------|-----------|
| 131703-031 | ● nero/black | x1 | 10 | 0.43 | mc. 0.051 |

and - 05 11 12 07 08 09

main component sizes



18 logon-schienale traforato in plastica colorato a vista

logan-perforated plastic back coloured at sight

| code | finishing | q.kit | q.pack | a | b | kg.x1 | vol.x1 |
|------------|--------------|-------|--------|-----|-----|-------|-----------|
| 132103-083 | ● nero/black | x1 | 10 | 390 | 500 | 0.82 | mc. 0.088 |

19 logon-schienale pieno in plastica colorato a vista

logan-full plastic back coloured at sight

| code | finishing | q.kit | q.pack | a | b | kg.x1 | vol.x1 |
|------------|--------------|-------|--------|-----|-----|-------|-----------|
| 132103-089 | ● nero/black | x1 | 10 | 390 | 500 | 0.82 | mc. 0.088 |

and - 06 07 08 09



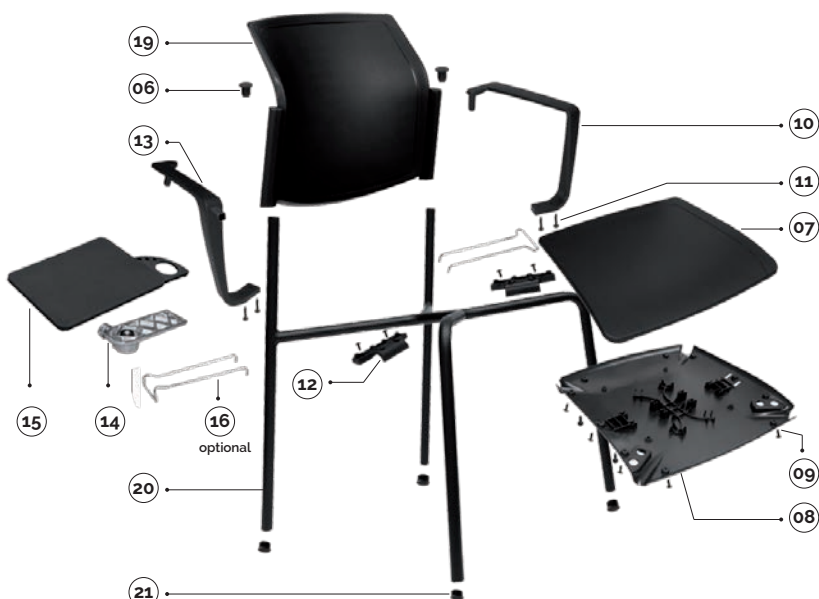
for all colour codes, see page 159

logan

4-legs

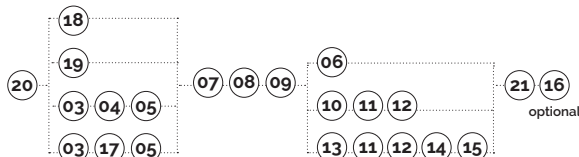


CERTIFIED BY
BIFMA
CATAS



logon-carrello portasedie con accessori
logon-trolley for chairs with accessories

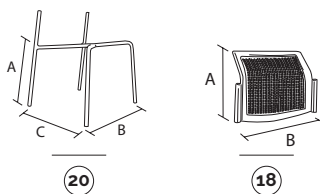
| code | finishing | q.kit |
|------------|--------------|-------|
| 110803-344 | ● nero/black | x1 |



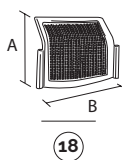
plastic colours

- nero/black
- grigio/gray ral 7040
- bianco/white ral 9003
- blu/blue ral 5014

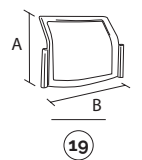
main component sizes



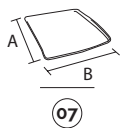
20



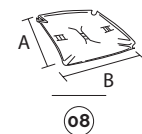
18



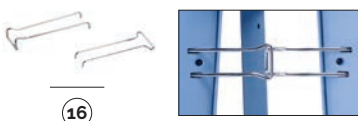
19



07



08



16

optional

20 logon-telaio 4 gambe in tubo d.22 senza tappi

logon-fixed four legs frame d.22 without caps

| code | finishing | q.kit | q.pack | a | b | c | kg.x1 | vol.x1 |
|------------|----------------------|-------|--------|-----|-----|-----|-------|-----------|
| 110603-059 | ● nero/black | x1 | 80 | 440 | 530 | 510 | 2,70 | mc. 0.017 |
| 110604-059 | ● grigio/grey ig2621 | x1 | 80 | 440 | 530 | 510 | 2,70 | mc. 0.017 |
| 110610-059 | ● cromato/chrome | x1 | 80 | 440 | 530 | 510 | 2,70 | mc. 0.017 |

21 confezione puntali tondi d.22 neri

black inner round flat caps d.22 package

| code | finishing | q.kit | q.pack |
|------------|--------------|-------|--------|
| 137003-073 | ● nero/black | x4 | 200 |

18 logon-schienale traforato in plastica colorato a vista

logon-perforated plastic back coloured at sight

| code | finishing | q.kit | q.pack | a | b | kg.x1 | vol.x1 |
|------------|--------------|-------|--------|-----|-----|-------|-----------|
| 132103-083 | ● nero/black | x1 | 10 | 390 | 500 | 0,82 | mc. 0.088 |

19 logon-schienale pieno in plastica colorato a vista

logon-full plastic back coloured at sight

| code | finishing | q.kit | q.pack | a | b | kg.x1 | vol.x1 |
|------------|--------------|-------|--------|-----|-----|-------|-----------|
| 132103-089 | ● nero/black | x1 | 10 | 390 | 500 | 0,82 | mc. 0.088 |

06 logon-tappo per telaio e schienale

inner caps-cover head d.22

| code | finishing | q.kit | q.pack | kg.x1 | vol.x1 |
|------------|--------------|-------|--------|-------|-----------|
| 131703-029 | ● nero/black | x2 | 20 | 0,025 | mc. 0.001 |

07 logon-sedile in plastica colorato a vista

logon-plastic seat coloured at sight

| code | finishing | q.kit | q.pack | a | b | kg.x1 | vol.x1 |
|------------|--------------|-------|--------|-----|-----|-------|----------|
| 132203-082 | ● nero/black | x1 | 10 | 430 | 460 | 0,86 | mc. 0.01 |

08 logon-sottosedile in plastica per telaio 4 gambe e slitta

logon-outer plastic seat for four legs and slide

| code | finishing | q.kit | q.pack | a | b | kg.x1 | vol.x1 |
|------------|--------------|-------|--------|-----|-----|-------|-----------|
| 132203-080 | ● nero/black | x1 | 20 | 420 | 450 | 0,51 | mc. 0.007 |

09 logon-sacchetto con viti + pf1 per 10 sedie - per sedile

logon-screws + pf1 for 10 chairs (screw for fixed seat panel)

| code | finishing | q.kit | q.pack |
|------------|--------------|-------|--------|
| 117000-022 | ● nero/black | x0.1 | 1 |

16 logon-coppia agganci laterali maschio + femmina cromati

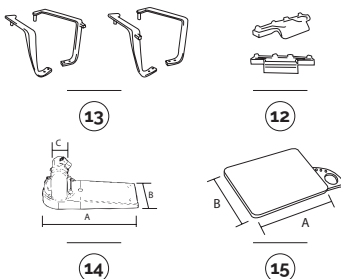
logon-chrome lateral hooks male + female

| code | finishing | q.kit | q.pack | kg.x1 | vol.x1 |
|------------|------------------|-------|--------|-------|------------|
| 113410-100 | ● cromato/chrome | x1 | 100 | 0,13 | mc. 0.0004 |

logan

4-legs/tablet accessories

main component sizes



13 logan-coppia braccioli con aggancio portatavoletta in plastica logan-pair of plastic arms right/left with writing tablet hook

| code | finishing | q.kit | q.pack | kg.x1 | vol.x1 |
|------------|--------------|-------|--------|----------------------------------|----------------|
| 131703-032 | ● nero/black | x1 | 10 | left + right writing tablet hook | 0,49 mc. 0,051 |
| 131703-033 | ● nero/black | x1 | 10 | right + left writing tablet hook | 0,49 mc. 0,051 |

11 logan-kit viti per 10 coppie braccioli logan-kit screws for 10 pair arms

| code | finishing | q.kit | q.pack | kg.x1 | vol.x1 |
|------------|--------------|-------|--------|-------|--------|
| 117000-025 | ● nero/black | x0.1 | 1 | | |

12 logan-piastra di fissaggio per bracciolo logan-fixing plate for arm

| code | finishing | q.kit | q.pack | kg.x1 | vol.x1 |
|------------|--------------|-------|--------|-------|------------|
| 131703-034 | ● nero/black | x2 | 50 | 0,07 | mc. 0,0013 |

14 spta-snodo tavoletta antipanico in alluminio lucido spta-polished aluminium swivel safety mechanism for tablet

| code | finishing | q.kit | q.pack | a | b | c | kg.x1 | vol.x1 |
|------------|-------------------------------------|-------|--------|-----|----|-------|-------|-----------|
| 111701-900 | ● alluminio/aluminium destro/right | x1 | 10 | 180 | 66 | 15x15 | 0,365 | mc. 0,001 |
| 111701-901 | ● alluminio/aluminium sinistro/left | x1 | 10 | 180 | 66 | 15x15 | 0,365 | mc. 0,001 |

15 tlt3-tavoletta ambidestro con portabicchiere e portapenne tlt3--writing tablet with cup holder and pen tray

| code | finishing | q.kit | q.pack | a | b | kg.x1 | vol.x1 |
|------------|--------------|-------|--------|-----|-----|-------|-----------|
| 134003-041 | ● nero/black | x1 | 10 | 410 | 300 | 1,05 | mc. 0,036 |

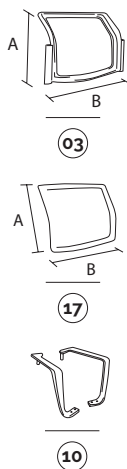
TLT tablet TLT2 tablet TLT3 tablet BEAN tablet TL02 tablet SPT2 mechanism tablet SPTA mechanism antipanic



for writing tablet options, see page 242/243

4-legs/options

main component sizes



03 logan-telaio schienale in plastica portante logan-outer back frame in plastic

| code | finishing | q.kit | q.pack | a | b | kg.x1 | vol.x1 |
|------------|--------------|-------|--------|-----|-----|-------|-----------|
| 132103-084 | ● nero/black | x1 | 10 | 390 | 500 | 0,58 | mc. 0,088 |

17 logan-pannello schienale in plastica da tappezzare logan-plastic panel back for upholstery

| code | finishing | q.kit | q.pack | a | b | kg.x1 | vol.x1 |
|------------|--------------|-------|--------|-----|-----|-------|-----------|
| 132103-086 | ● nero/black | x1 | 20 | 380 | 420 | 0,90 | mc. 0,005 |

05 vite hilo tc + 4x14 zn nere screw hilo tc + 4x14 zn black

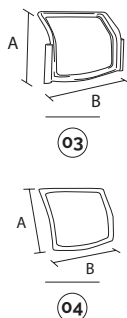
| code | finishing | q.kit |
|------------|--------------|-------|
| 117803-120 | ● nero/black | x10 |

10 logan-coppia braccioli dx/sx in plastica logan-pair of plastic arms right/left

| code | finishing | q.kit | q.pack | kg.x1 | vol.x1 |
|------------|--------------|-------|--------|-------|-----------|
| 131703-031 | ● nero/black | x1 | 10 | 0,43 | mc. 0,051 |

and · 11 12 07 08 09

main component sizes



03 logan-telaio schienale in plastica portante logan-outer back frame in plastic

| code | finishing | q.kit | q.pack | a | b | kg.x1 | vol.x1 |
|------------|--------------|-------|--------|-----|-----|-------|-----------|
| 132103-084 | ● nero/black | x1 | 10 | 390 | 500 | 0,58 | mc. 0,088 |

04 logan-cornice schienale in plastica per rete logan-open frame in plastic for mesh

| code | finishing | q.kit | q.pack | a | b | kg.x1 | vol.x1 |
|------------|--------------|-------|--------|-----|-----|-------|-----------|
| 132103-085 | ● nero/black | x1 | 20 | 380 | 420 | 0,30 | mc. 0,005 |

and · 05 10 11 12 07 08 09



for all colour codes, see page 159

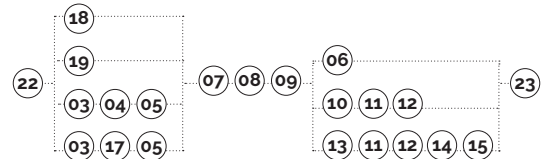
logan

4-legs for castors



logan-carrello portasedie con accessori
logan-trolley for chairs with accessories

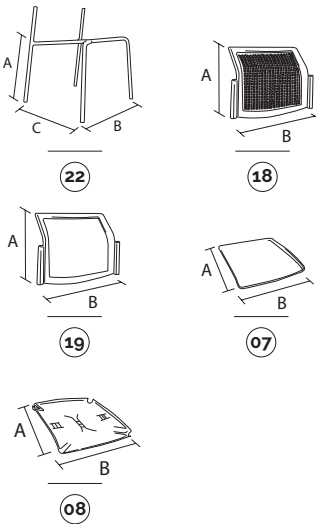
| code | finishing | q.kit |
|------------|--------------|-------|
| 110803-344 | ● nero/black | x1 |



plastic colours

- nero/black
- grigio/gray ral 7040
- bianco/white ral 9003
- blu/blue ral 5014

main component sizes



22 logan-telaio 4 gambe predisposto per 4 ruote + 4 tappi porta ruote
logan-fixed four legs frame issued for 4 wheels + 4 inner black caps for castors

| code | finishing | q.kit | q.pack | a | b | c | kg.x1 | vol.x1 |
|------------|----------------------|-------|--------|-----|-----|-----|-------|-----------|
| 110603-058 | ● nero/black | x1 | 80 | 440 | 470 | 510 | 2,70 | mc. 0.017 |
| 110604-058 | ● grigio/grey ig2621 | x1 | 80 | 440 | 470 | 510 | 2,70 | mc. 0.017 |
| 110610-058 | ● cromato/chrome | x1 | 80 | 440 | 470 | 510 | 2,70 | mc. 0.017 |

23 doppia ruota d.50 in desmopan con perno montato
twin wheel castor d.50 desmopan with pivot mounted

| code | finishing | q.kit |
|------------|--------------|-------|
| 134403-003 | ● nero/black | x4 |

18 logan-schienale traforato in plastica colorato a vista
logan-perforated plastic back coloured at sight

| code | finishing | q.kit | q.pack | a | b | kg.x1 | vol.x1 |
|------------|--------------|-------|--------|-----|-----|-------|-----------|
| 132103-083 | ● nero/black | x1 | 10 | 390 | 500 | 0,82 | mc. 0.088 |

19 logan-schienale pieno in plastica colorato a vista
logan-full plastic back coloured at sight

| code | finishing | q.kit | q.pack | a | b | kg.x1 | vol.x1 |
|------------|--------------|-------|--------|-----|-----|-------|-----------|
| 132103-089 | ● nero/black | x1 | 10 | 390 | 500 | 0,82 | mc. 0.088 |

06 logan-tappo per telaio e schienale
inner caps-cover head d.22

| code | finishing | q.kit | q.pack | kg.x1 | vol.x1 |
|------------|--------------|-------|--------|-------|-----------|
| 131703-029 | ● nero/black | x2 | 20 | 0,025 | mc. 0.001 |

07 logan-sedile in plastica colorato a vista
logan-plastic seat coloured at sight

| code | finishing | q.kit | q.pack | a | b | kg.x1 | vol.x1 |
|------------|--------------|-------|--------|-----|-----|-------|----------|
| 132203-082 | ● nero/black | x1 | 10 | 430 | 460 | 0,86 | mc. 0.01 |

08 logan-sottosedile in plastica per telaio 4 gambe e slitta
logan-outer plastic seat for four legs and slide

| code | finishing | q.kit | q.pack | a | b | kg.x1 | vol.x1 |
|------------|--------------|-------|--------|-----|-----|-------|-----------|
| 132203-080 | ● nero/black | x1 | 20 | 420 | 450 | 0,51 | mc. 0.007 |

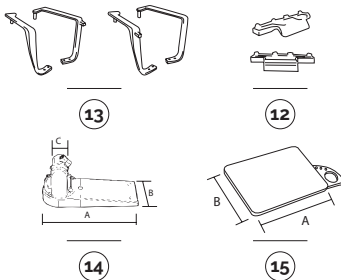
09 logan-sacchetto con viti + pf1 per 10 sedie - per sedile
logan-screws + pf1 for 10 chairs (screw for fixed seat panel)

| code | finishing | q.kit | q.pack |
|------------|--------------|-------|--------|
| 117000-022 | ● nero/black | x0.1 | 1 |

logan

4-legs for castors/tablet accessories

main component sizes



13 logan-coppia braccioli con aggancio portatavoletta in plastica

logan-pair of plastic arms right/left with writing tablet hook

| code | finishing | q.kit | q.pack | kg.x1 | vol.x1 |
|------------|--------------|-------|--------|----------------------------------|----------------|
| 131703-032 | ● nero/black | x1 | 10 | left + right writing tablet hook | 0,49 mc. 0,051 |
| 131703-033 | ● nero/black | x1 | 10 | right + left writing tablet hook | 0,49 mc. 0,051 |

11 logan-kit viti per 10 coppie braccioli

logan-kit screws for 10 pair arms

| code | finishing | q.kit | q.pack | kg.x1 | vol.x1 |
|------------|--------------|-------|--------|-------|--------|
| 117000-025 | ● nero/black | x0.1 | 1 | | |

12 logan-piastra di fissaggio per bracciolo

logan-fixing plate for arm

| code | finishing | q.kit | q.pack | kg.x1 | vol.x1 |
|------------|--------------|-------|--------|-------|------------|
| 131703-034 | ● nero/black | x2 | 50 | 0,07 | mc. 0,0013 |

14 spta-snodo tavoletta antipanico in alluminio lucido

spta-polished aluminium swivel safety mechanism for tablet

| code | finishing | q.kit | q.pack | a | b | c | kg.x1 | vol.x1 |
|------------|-------------------------------------|-------|--------|-----|----|-------|-------|-----------|
| 111701-900 | ● alluminio/aluminium destro/right | x1 | 10 | 180 | 66 | 15x15 | 0,365 | mc. 0,001 |
| 111701-901 | ● alluminio/aluminium sinistro/left | x1 | 10 | 180 | 66 | 15x15 | 0,365 | mc. 0,001 |

15 tlt3-tavoletta ambidestro con portabicchiere e portapenne

tlt3--writing tablet with cup holder and pen tray

| code | finishing | q.kit | q.pack | a | b | kg.x1 | vol.x1 |
|------------|--------------|-------|--------|-----|-----|-------|-----------|
| 134003-041 | ● nero/black | x1 | 10 | 410 | 300 | 1,05 | mc. 0,036 |

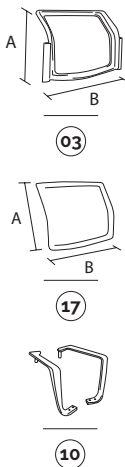
TLT tablet TLT2 tablet TLT3 tablet BEAN tablet TL02 tablet SPT2 mechanism tablet SPTA mechanism antipanic



for writing tablet options, see page 242/243

4-legs for castors/options

main component sizes



03 logan-telaio schienale in plastica portante

logan-outer back frame in plastic

| code | finishing | q.kit | q.pack | a | b | kg.x1 | vol.x1 |
|------------|--------------|-------|--------|-----|-----|-------|-----------|
| 132103-084 | ● nero/black | x1 | 10 | 390 | 500 | 0,58 | mc. 0,088 |

17 logan-pannello schienale in plastica da tappezzare

logan-plastic panel back for upholstery

| code | finishing | q.kit | q.pack | a | b | kg.x1 | vol.x1 |
|------------|--------------|-------|--------|-----|-----|-------|-----------|
| 132103-086 | ● nero/black | x1 | 20 | 380 | 420 | 0,90 | mc. 0,005 |

05 vite hilo tc + 4x14 zn nere

screw hilo tc + 4x14 zn black

| code | finishing | q.kit |
|------------|--------------|-------|
| 117803-120 | ● nero/black | x10 |

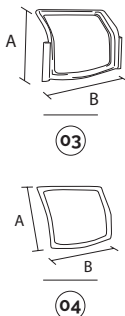
10 logan-coppia braccioli dx/sx in plastica

logan-pair of plastic arms right/left

| code | finishing | q.kit | q.pack | kg.x1 | vol.x1 |
|------------|--------------|-------|--------|-------|-----------|
| 131703-031 | ● nero/black | x1 | 10 | 0,43 | mc. 0,051 |

and · 11 12 07 08 09

main component sizes



03 logan-telaio schienale in plastica portante

logan-outer back frame in plastic

| code | finishing | q.kit | q.pack | a | b | kg.x1 | vol.x1 |
|------------|--------------|-------|--------|-----|-----|-------|-----------|
| 132103-084 | ● nero/black | x1 | 10 | 390 | 500 | 0,58 | mc. 0,088 |

04 logan-cornice schienale in plastica per rete

logan-open frame in plastic for mesh

| code | finishing | q.kit | q.pack | a | b | kg.x1 | vol.x1 |
|------------|--------------|-------|--------|-----|-----|-------|-----------|
| 132103-085 | ● nero/black | x1 | 20 | 380 | 420 | 0,30 | mc. 0,005 |

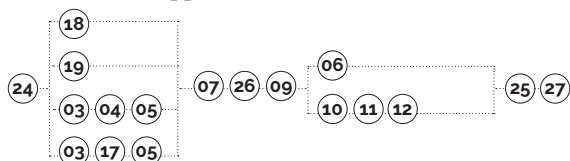
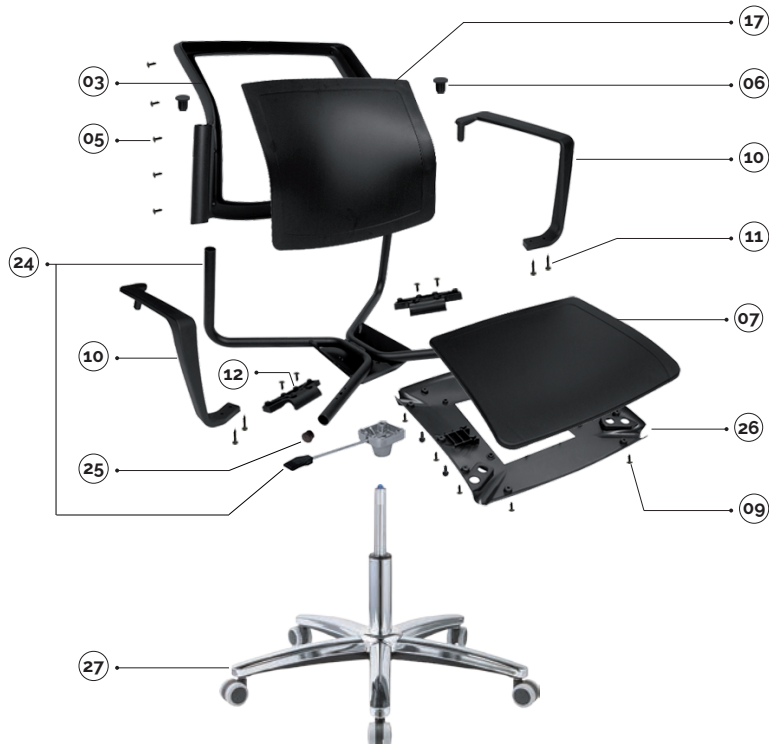
and · 05 10 11 12 07 08 09



for all colour codes, see page 159

logan

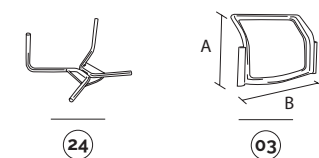
swivel



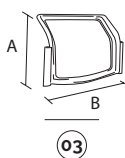
plastic colours

- nero/black
- grigio/gray ral 7040
- bianco/white ral 9003
- blu/blue ral 5014

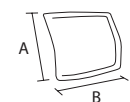
main component sizes



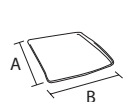
24



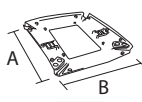
03



17



07



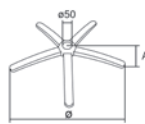
26



10



12



27

24 logan-telaio per girevole comando a gas senza tappi
logan-swivel frame with gas lever without caps

| code | finishing | q.kit | q.pack | kg.x1 | vol.x1 |
|------------|--------------|-------|--------|-------|-----------|
| 110903-024 | ● nero/black | x1 | 100 | 2,55 | mc. 0,046 |

25 tc22-tappo copritesta alettato d.22 nero
tc22-inner caps-cover head d.22 black

| code | finishing | q.kit |
|------------|--------------|-------|
| 134103-220 | ● nero/black | x2 |

03 logan-telaio schienale in plastica portante
logan-outer back frame in plastic

| code | finishing | q.kit | q.pack | a | b | kg.x1 | vol.x1 |
|------------|--------------|-------|--------|-----|-----|-------|-----------|
| 132103-084 | ● nero/black | x1 | 10 | 390 | 500 | 0,58 | mc. 0,088 |

17 logan-pannello schienale in plastica da tappezzare
logan-plastic panel back for upholstery

| code | finishing | q.kit | q.pack | a | b | kg.x1 | vol.x1 |
|------------|--------------|-------|--------|-----|-----|-------|-----------|
| 132103-086 | ● nero/black | x1 | 20 | 380 | 420 | 0,90 | mc. 0,005 |

05 vite hilo tc + 4x14 zn nere
screw hilo tc+ 4x14 zn black

| code | finishing | q.kit |
|------------|--------------|-------|
| 117803-120 | ● nero/black | x10 |

07 logan-sedile in plastica colorato a vista
logan-plastic seat coloured at sight

| code | finishing | q.kit | q.pack | a | b | kg.x1 | vol.x1 |
|------------|--------------|-------|--------|-----|-----|-------|----------|
| 132203-082 | ● nero/black | x1 | 10 | 430 | 460 | 0,86 | mc. 0,01 |

26 logan-sottosedile esterno in plastica per telaio panca e girevole
logan-outer plastic seat for swivel and bench

| code | finishing | q.kit | q.pack | a | b | kg.x1 | vol.x1 |
|------------|--------------|-------|--------|-----|-----|-------|-----------|
| 132203-081 | ● nero/black | x1 | 20 | 420 | 450 | 0,47 | mc. 0,007 |

09 logan-sacchetto con viti + pf1 per 10 sedie - per sedile
logan-screws + pf1 for 10 chairs (screw for fixed seat panel)

| code | finishing | q.kit | q.pack |
|------------|--------------|-------|--------|
| 117000-022 | ● nero/black | x0.1 | 1 |

10 logan-coppia braccioli dx/sx in plastica
logan-pair of plastic arms right/left

| code | finishing | q.kit | q.pack | kg.x1 | vol.x1 |
|------------|--------------|-------|--------|-------|-----------|
| 131703-031 | ● nero/black | x1 | 10 | 0,43 | mc. 0,051 |

11 logan-kit viti per 10 coppie braccioli
logan-kit screws for 10 pair arms

| code | finishing | q.kit | q.pack |
|------------|--------------|-------|--------|
| 117000-025 | ● nero/black | x0.1 | 1 |

12 logan-piastra di fissaggio per bracciolo
logan-fixing plate for arm

| code | finishing | q.kit | q.pack | kg.x1 | vol.x1 |
|------------|--------------|-------|--------|-------|------------|
| 131703-034 | ● nero/black | x2 | 50 | 0,07 | mc. 0,0013 |

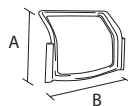
27 b40 base in metallo d.640 con coprisaldatura
b40 metal base d.640 with cover welding

| code | finishing | q.kit | q.pack | a | o | kg.x1 | vol.x1 |
|------------|------------------|-------|--------|----|-----|-------|-----------|
| 110210-027 | ● cromato/chrome | x1 | 5 | 60 | 640 | 2,85 | mc. 0,014 |

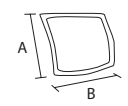
logan

swivel/options

main component sizes



03



04



03 logan-telaio schienale in plastica portante
logan-outer back frame in plastic

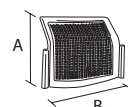
| code | finishing | q.kit | q.pack | a | b | kg.x1 | vol.x1 |
|------------|--------------|-------|--------|-----|-----|-------|-----------|
| 132103-084 | ● nero/black | x1 | 10 | 390 | 500 | 0,58 | mc. 0,088 |

04 logan-cornice schienale in plastica per rete
logan-open frame in plastic for mesh

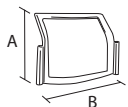
| code | finishing | q.kit | q.pack | a | b | kg.x1 | vol.x1 |
|------------|--------------|-------|--------|-----|-----|-------|-----------|
| 132103-085 | ● nero/black | x1 | 20 | 380 | 420 | 0,30 | mc. 0,005 |

and - 05 10 11 12 07 26 09

main component sizes



18



19



18 logan-schienale traforato in plastica colorato a vista
logan-perforated plastic back coloured at sight

| code | finishing | q.kit | q.pack | a | b | kg.x1 | vol.x1 |
|------------|--------------|-------|--------|-----|-----|-------|-----------|
| 132103-083 | ● nero/black | x1 | 10 | 390 | 500 | 0,82 | mc. 0,088 |

19 logan-schienale pieno in plastica colorato a vista
logan-full plastic back coloured at sight

| code | finishing | q.kit | q.pack | a | b | kg.x1 | vol.x1 |
|------------|--------------|-------|--------|-----|-----|-------|-----------|
| 132103-089 | ● nero/black | x1 | 10 | 390 | 500 | 0,82 | mc. 0,088 |

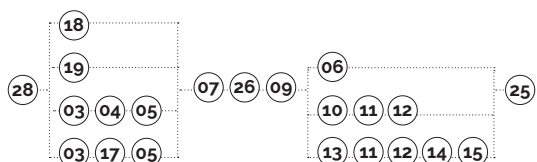
and - 10 11 12 07 26 09



for all colour codes, see page 159

logan

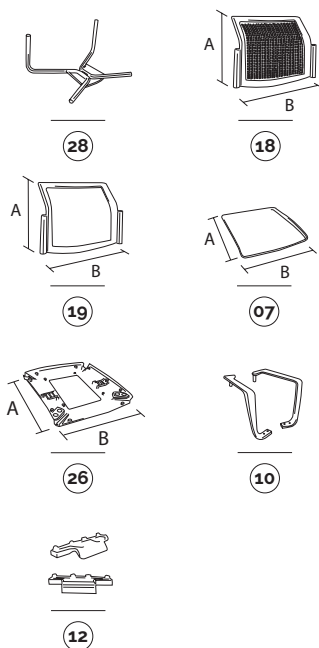
bench



plastic colours

- nero/black
- grigio/gray ral 7040
- bianco/white ral 9003
- blu/blue ral 5014

main component sizes



28 logan-telaio per panca senza tappi
logan-bench frame caps excluded

| code | finishing | q.kit | q.pack | kg.x1 | vol.x1 |
|------------|--------------|-------|--------|-------|-----------|
| 110703-024 | ● nero/black | x1 | 100 | 2,20 | mc. 0,046 |

25 tc22-tappo copritesta alettato d.22 nero
tc22-inner caps-cover head d.22 black

| code | finishing | q.kit |
|------------|--------------|-------|
| 134103-220 | ● nero/black | x2 |

18 logan-schienale traforato in plastica colorato a vista
logan-perforated plastic back coloured at sight

| code | finishing | q.kit | q.pack | a | b | kg.x1 | vol.x1 |
|------------|--------------|-------|--------|-----|-----|-------|-----------|
| 132103-083 | ● nero/black | x1 | 10 | 390 | 500 | 0,82 | mc. 0,088 |

19 logan-schienale pieno in plastica colorato a vista
logan-full plastic back coloured at sight

| code | finishing | q.kit | q.pack | a | b | kg.x1 | vol.x1 |
|------------|--------------|-------|--------|-----|-----|-------|-----------|
| 132103-089 | ● nero/black | x1 | 10 | 390 | 500 | 0,82 | mc. 0,088 |

06 logan-tappo per telaio e schienale
inner caps-cover head d.22

| code | finishing | q.kit | q.pack | kg.x1 | vol.x1 |
|------------|--------------|-------|--------|-------|-----------|
| 131703-029 | ● nero/black | x2 | 20 | 0,025 | mc. 0,001 |

07 logan-sedile in plastica colorato a vista
logan-plastic seat coloured at sight

| code | finishing | q.kit | q.pack | a | b | kg.x1 | vol.x1 |
|------------|--------------|-------|--------|-----|-----|-------|----------|
| 132203-082 | ● nero/black | x1 | 10 | 430 | 460 | 0,86 | mc. 0,01 |

26 logan-sottosedile esterno in plastica per telaio panca e girevole
logan-outer plastic seat for swivel and bench

| code | finishing | q.kit | q.pack | a | b | kg.x1 | vol.x1 |
|------------|--------------|-------|--------|-----|-----|-------|-----------|
| 132203-081 | ● nero/black | x1 | 20 | 420 | 450 | 0,47 | mc. 0,007 |

09 logan-sacchetto con viti + pf1 per 10 sedile - per sedile
logan-screws + pf1 for 10 chairs (screw for fixed seat panel)

| code | finishing | q.kit | q.pack |
|------------|--------------|-------|--------|
| 117000-022 | ● nero/black | x0.1 | 1 |

10 logan-coppia braccioli dx/sx in plastica
logan-pair of plastic arms right/left

| code | finishing | q.kit | q.pack | kg.x1 | vol.x1 |
|------------|--------------|-------|--------|-------|-----------|
| 131703-031 | ● nero/black | x1 | 10 | 0,43 | mc. 0,051 |

11 logan-kit viti per 10 coppie braccioli
logan-kit screws for 10 pair arms

| code | finishing | q.kit | q.pack |
|------------|--------------|-------|--------|
| 117000-025 | ● nero/black | x0.1 | 1 |

12 logan-piastra di fissaggio per bracciolo
logan-fixing plate for arm

| code | finishing | q.kit | q.pack | kg.x1 | vol.x1 |
|------------|--------------|-------|--------|-------|------------|
| 131703-034 | ● nero/black | x2 | 50 | 0,07 | mc. 0,0013 |

for the bench components, see page 249

OPTIONAL
bench
connector

E-USB **NEW**
bench plug



JIM **NEW**
bench leg

APOLL
bench arm



plastic

90GM
bench leg

90GF
bench leg

100GM
bench leg

200GM
bench leg

PIONEER
bench arm



metal

CUT
bench leg

SLIM
bench leg

CUT
bench arm

SLIM
bench arm



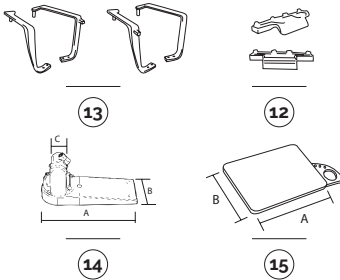
aluminium

optionals

logan

bench/tablet accessories

main component sizes



13 logan-coppia braccioli con aggancio portatavoletta in plastica
logan-pair of plastic arms right/left with writing tablet hook

| code | finishing | q.kit | q.pack | kg.x1 | vol.x1 |
|------------|--------------|-------|--------|-------|-----------|
| 131703-032 | ● nero/black | x1 | 10 | 0.49 | mc. 0.051 |
| 131703-033 | ● nero/black | x1 | 10 | 0.49 | mc. 0.051 |

11 logan-kit viti per 10 coppie braccioli
logan-kit screws for 10 pair arms

| code | finishing | q.kit | q.pack | kg.x1 | vol.x1 |
|------------|--------------|-------|--------|-------|--------|
| 117000-025 | ● nero/black | x0.1 | 1 | | |

12 logan-piastra di fissaggio per bracciolo
logan-fixing plate for arm

| code | finishing | q.kit | q.pack | kg.x1 | vol.x1 |
|------------|--------------|-------|--------|-------|------------|
| 131703-034 | ● nero/black | x2 | 50 | 0.07 | mc. 0.0013 |

14 spta-snodo tavoletta antipanico in alluminio lucido
spta-polished aluminium swivel safety mechanism for tablet

| code | finishing | q.kit | q.pack | a | b | c | kg.x1 | vol.x1 |
|------------|-------------------------------------|-------|--------|-----|----|-------|-------|-----------|
| 111701-900 | ● alluminio/aluminium destro/right | x1 | 10 | 180 | 66 | 15x15 | 0.365 | mc. 0.001 |
| 111701-901 | ● alluminio/aluminium sinistro/left | x1 | 10 | 180 | 66 | 15x15 | 0.365 | mc. 0.001 |

15 tlt3-tavoletta ambidestro con portabicchiere e portapenne
tlt3--writing tablet with cup holder and pen tray

| code | finishing | q.kit | q.pack | a | b | kg.x1 | vol.x1 |
|------------|--------------|-------|--------|-----|-----|-------|-----------|
| 134003-041 | ● nero/black | x1 | 10 | 410 | 300 | 1.05 | mc. 0.036 |

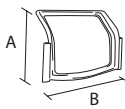
TLT tablet TLT2 tablet TLT3 tablet BEAN tablet TL02 tablet SPT2 mechanism tablet SPTA mechanism antipanic



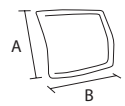
for writing tablet options, see page 242/243

bench/options

main component sizes



03



17



10



03 logan-telaio schienale in plastica portante
logan-outer back frame in plastic

| code | finishing | q.kit | q.pack | a | b | kg.x1 | vol.x1 |
|------------|--------------|-------|--------|-----|-----|-------|-----------|
| 132103-084 | ● nero/black | x1 | 10 | 390 | 500 | 0.58 | mc. 0.088 |

17 logan-pannello schienale in plastica da tappezzare
logan-plastic panel back for upholstery

| code | finishing | q.kit | q.pack | a | b | kg.x1 | vol.x1 |
|------------|--------------|-------|--------|-----|-----|-------|-----------|
| 132103-086 | ● nero/black | x1 | 20 | 380 | 420 | 0.90 | mc. 0.005 |

05 vite hilo tc + 4x14 zn nere
screw hilo tc+ 4x14 zn black

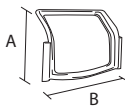
| code | finishing | q.kit |
|------------|--------------|-------|
| 117803-120 | ● nero/black | x10 |

10 logan-coppia braccioli dx/sx in plastica
logan-pair of plastic arms right/left

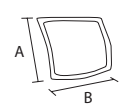
| code | finishing | q.kit | q.pack | kg.x1 | vol.x1 |
|------------|--------------|-------|--------|-------|-----------|
| 131703-031 | ● nero/black | x1 | 10 | 0.43 | mc. 0.051 |

and **11 12 07 26 09**

main component sizes



03



04



03 logan-telaio schienale in plastica portante
logan-outer back frame in plastic

| code | finishing | q.kit | q.pack | a | b | kg.x1 | vol.x1 |
|------------|--------------|-------|--------|-----|-----|-------|-----------|
| 132103-084 | ● nero/black | x1 | 10 | 390 | 500 | 0.58 | mc. 0.088 |

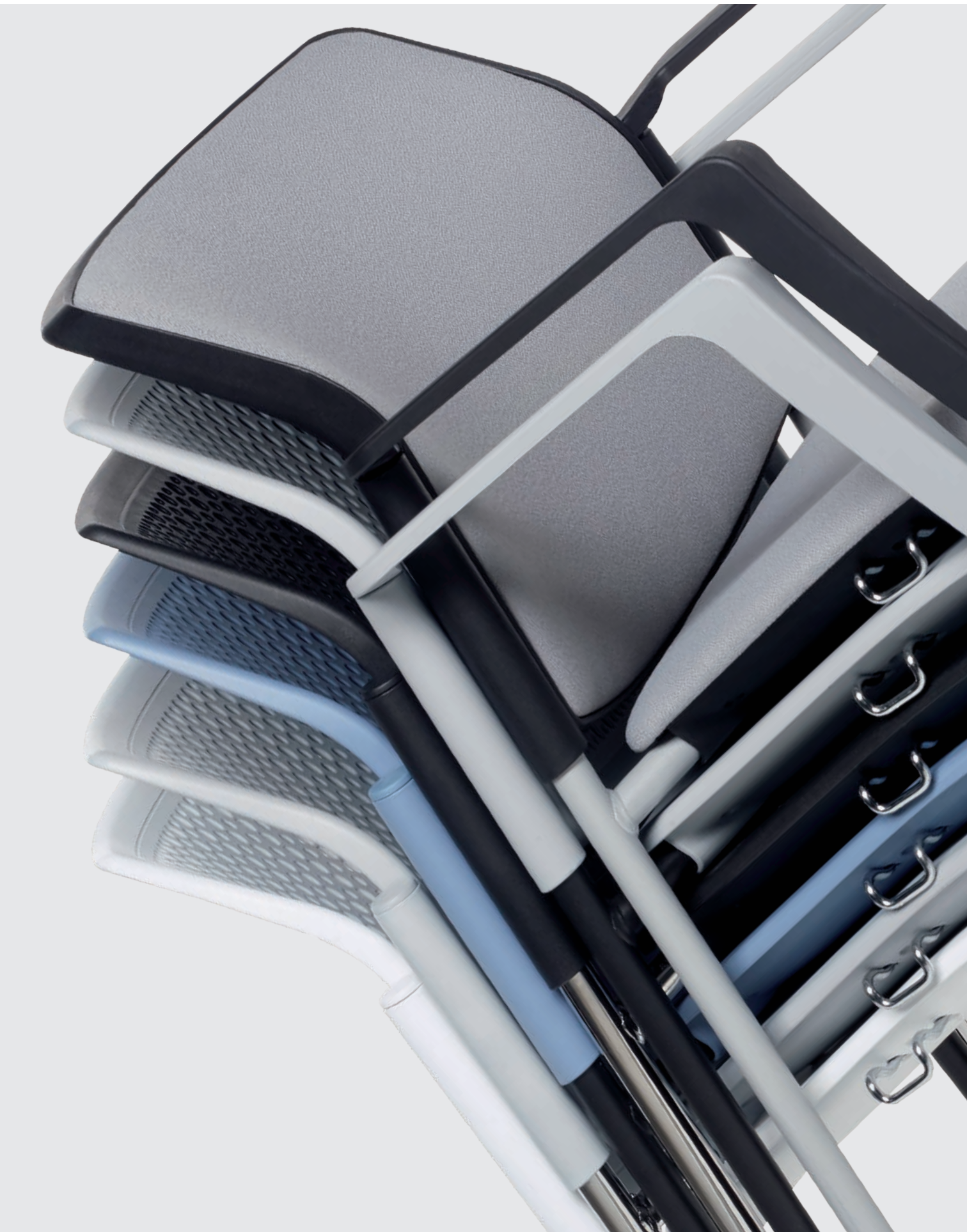
04 logan-cornice schienale in plastica per rete
logan-open frame in plastic for mesh

| code | finishing | q.kit | q.pack | a | b | kg.x1 | vol.x1 |
|------------|--------------|-------|--------|-----|-----|-------|-----------|
| 132103-085 | ● nero/black | x1 | 20 | 380 | 420 | 0.30 | mc. 0.005 |

and **05 10 11 12 07 26 09**



for all colour codes, see page 159





plastic colour codes



18 schienale traforato in plastica
perforated plastic backrest

- **132103-083** nero/black
- **132104-083** grigio/gray ral 7040
- **132105-083** bianco/white ral 9003
- **132115-083** blu/blue ral 5014



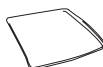
19 schienale pieno in plastica
full plastic backrest

- **132103-089** nero/black
- **132104-089** grigio/gray ral 7040
- **132105-089** bianco/white ral 9003
- **132115-089** blu/blue ral 5014



06 tappo in plastica
plastic inner cap

- **131703-029** nero/black
- **131704-029** grigio/gray ral 7040
- **131705-029** bianco/white ral 9003
- **131715-029** blu/blue ral 5014



07 sedile in plastica
plastic seat

- **132203-082** nero/black
- **132204-082** grigio/gray ral 7040
- **132205-082** bianco/white ral 9003
- **132215-082** blu/blue ral 5014



08 sottosedile in plastica
outer plastic seat

- **132203-080** nero/black
- **132204-080** grigio/gray ral 7040
- **132205-080** bianco/white ral 9003
- **132215-080** blu/blue ral 5014



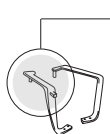
26 sottosedile in pl. per girevole e panca
outer plastic seat for swivel and bench

- **132203-081** nero/black
- **132204-081** grigio/gray ral 7040
- **132205-081** bianco/white ral 9003
- **132215-081** blu/blue ral 5014



10 braccioli in plastica
plastic armrests

- **131703-031** nero/black
- **131704-031** grigio/gray ral 7040
- **131705-031** bianco/white ral 9003
- **131715-031** blu/blue ral 5014



aggancio porta tavoletta DESTRO
RIGHT writing tablet hook

13 braccioli in plastica per tavoletta
plastic armrests with writing tablet hook

- **131703-032** L+R writ. tab hook nero/black
- **131704-032** L+R writ. tab hook grigio/gray ral 7040
- **131705-032** L+R writ. tab hook bianco/white ral 9003
- **131715-032** L+R writ. tab hook blu/blue ral 5014



aggancio porta tavoletta SINISTRO
LEFT writing tablet hook

13 braccioli in plastica per tavoletta
plastic armrests with writing tablet hook

- **131703-033** R+L writ. tab hook nero/black
- **131704-033** R+L writ. tab hook grigio/gray ral 7040
- **131705-033** R+L writ. tab hook bianco/white ral 9003
- **131715-033** R+L writ. tab hook blu/blue ral 5014

